



# Epigenetics Tools for Methylation Research

SEQUENOM<sup>®</sup>

[www.sequenom.com](http://www.sequenom.com)

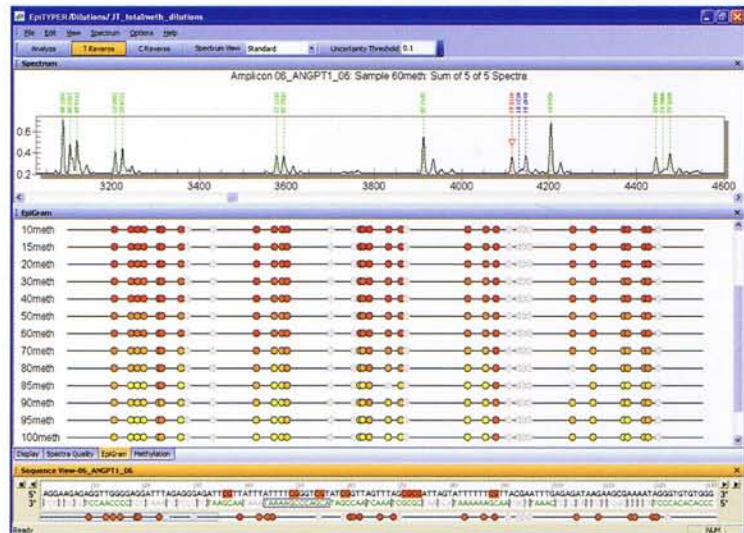
CGATGATCGACCAGTATGCCATGATGATCGAAGTATGCCATGATG  
CGCATTATGCGCATGATGATCGAAGCCGATGATCGACCAGTATGCCA  
CGCATTATGCGCGCATGATGATCGAAGTATCATGATGATCGAAGCCGAT

# EpiTYPER®

## A Paradigm Shift in Quantitative DNA Methylation Analysis

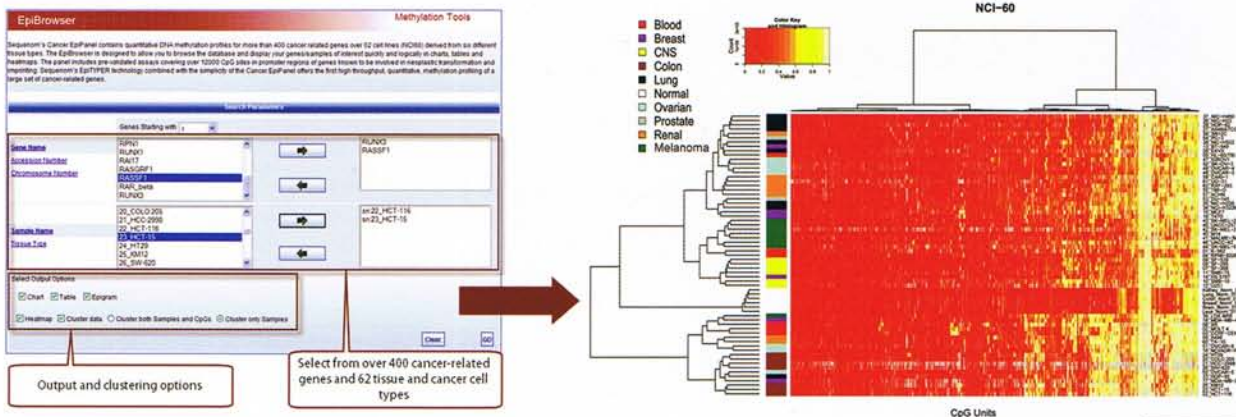
The most comprehensive and cost effective, high throughput, quantitative technology for DNA methylation analysis

- Target sequences up to 600 bp in one reaction to quantify differential methylation within large promoter regions
- Delivers individual methylation ratios for CpGs within a sequence



# EpiBrowser

## Display Methylation Profiles of Selected Genes and Samples

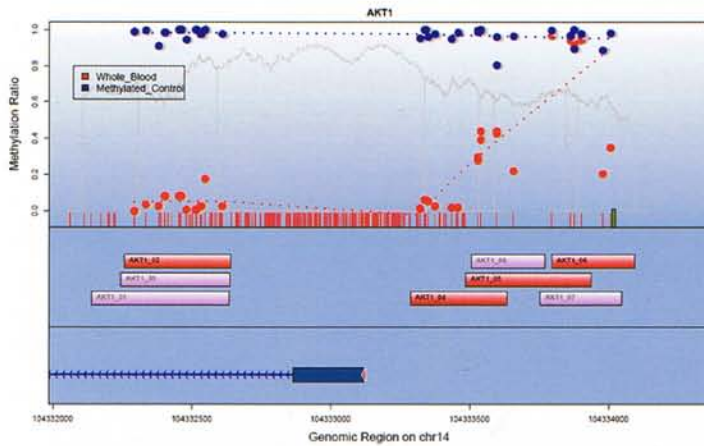


- Available for FREE at [www.sequenom.com](http://www.sequenom.com) or [mysequenom.com](http://mysequenom.com)
- Display methylation profiles in charts, tables, heatmaps, and EpiGrams



# EpiPanels

## Pre-Designed, Validated Assays for Quantitative Fine Mapping



**IMPORTANT NOTE:** WHEN ORDERING LEFT PRIMERS, INCLUDE THE TAG "AGGAAGAGA" ON THE 5' END  
WHEN ORDERING RIGHT PRIMERS, INCLUDE THE TAG "CAGTAATACGACTCACTATAGGAGGAGGCT" ON THE 5' END

AMPLICON NAME	SONM PREFERRED	LEFT PRIMER	RIGHT PRIMER
AKT1_01		GTTTTTGGTTGTAGAGTAGGGTTTAAAGTT	CCTCCCTCATAACCTTAAAAAACCC
AKT1_02	YES	TTAGTGTGTTTTAAAGTTTGGTTTTGG	CCCACCTCCCTCATAACCTTAAA
AKT1_04	YES	GATTTGGGGTTTGGGTTGG	ACCCACCTCCACTAACCTCCTATC
AKT1_05	YES	GGGTGGTTTAGGTTGATTTTAGGT	AAAAAAAATGATATCCCACTACTCA
AKT1_06	YES	GGTGTTAGGGTGGGTTGTGATAGT	CCTCAAAAAAATCACTCACAATAATCT

Detailed tables list the amplicon name, position, length, and CpG coverage. A primer index lists the sequences to order for each amplicon

Available at [www.sequenom.com](http://www.sequenom.com):

- Sequenom Standard EpiPanel
- Cancer EpiPanel

**FREE!**

Coming in 2008:

- Imprinting EpiPanel
- Mouse EpiPanel
- Developmental EpiPanel

# EpiDesigner

## Simple Primer Design Tool for Bisulfite-Treated Genomic DNA

**FREE!**

Go to  
[www.epidesigner.com](http://www.epidesigner.com)

Enter Sequence or Upload FASTA

Adjust Amplification Length and Annealing Temperatures

Perform Run- Then Review Primers and Export to EpiTYPER

- Information is displayed in a convenient graphical interface to order and export to EpiTYPER
- Multiple amplicons are designed, and CpG coverage and size are calculated

## ENJOY THE ISLAND!

We all know about the late nights spent in the lab, doing experiment after experiment.

Now you can get your time back.

Let us do the work for you, so you can spend more time with your friends, having a nice dinner, or going fishing...

SEQUENOM provides customized methylation analysis service solutions. Our dedicated, state-of-the-art services group will complete the entire process for you, including the tedious bisulfite treatment, at a price point that you can't beat.

Let us help you become more efficient and get some of your life back! We look forward to discussing your research project with you.

Go to [http://www.sequenom.com/seq\\_methylation\\_services.html](http://www.sequenom.com/seq_methylation_services.html) for more information, and direct specific questions to [epipanel@sequenom.com](mailto:epipanel@sequenom.com).



## Contact Information

### CORPORATE HEADQUARTERS

3595 John Hopkins Court  
San Diego, CA 92121-1331  
Phone (858) 202-9000  
Fax (858) 202-9001

### SEQUENOM BIOSCIENCES (INDIA) PVT. LTD

B-6/8, SECOND FLOOR,  
Commercial Complex, Safdarjung Enclave  
New Delhi - 110029-INDIA  
Phone 0091-11-46024871-74  
Fax 0091-11-46024875  
[sequenom.india@sequenom.com](mailto:sequenom.india@sequenom.com)

### EUROPEAN OFFICE

Mendelssohnstrasse 15D, D-22761  
Hamburg, Germany  
Phone (+49) 40-899676-0  
Fax (+49) 40-899676-10

### U.S. EAST COAST OFFICE

189 Wells Avenue  
Newton, MA 02459  
Phone (617) 244-8777  
Fax (617) 868-4975

### ASIA PACIFIC OFFICE

300 Herston Road  
Herston, Qld 4006  
Australia  
Phone (+61) 7 3845 3683  
Fax (+61) 7 3845 3506

### BEIJING REPRESENTATIVE OFFICE

No. 7, Guanghua Road, Hanwei Plaza, Suite 102 B  
Beijing, China, Zip: 100004  
Phone (86) -10-65614168  
Fax (86) -10-65614166  
[china.sequenom@sequenom.com](mailto:china.sequenom@sequenom.com)

### SEQUENOM, K.K

Kanda Iwamotocho Plaza, Building 9F  
2-4-1 Iwamotocho, Chiyoda - ku  
Tokyo 101-0032 Japan  
Phone (+81) 3 6802 5590  
Fax (+81) 3 5802-2690

For research use only. ©2008 Sequenom, Inc. All Rights reserved. Sequenom is a registered trademark of Sequenom, Inc. EpiTYPER and EpiDesigner are trademarks used by Sequenom, Inc. Products and/or processes are covered by one or more claims of United States Patent Nos.: 6,569,385; 6,500,621; 6,300,076; 6,258,538; US2005/0272070 and foreign equivalents. Other US and foreign patents pending.